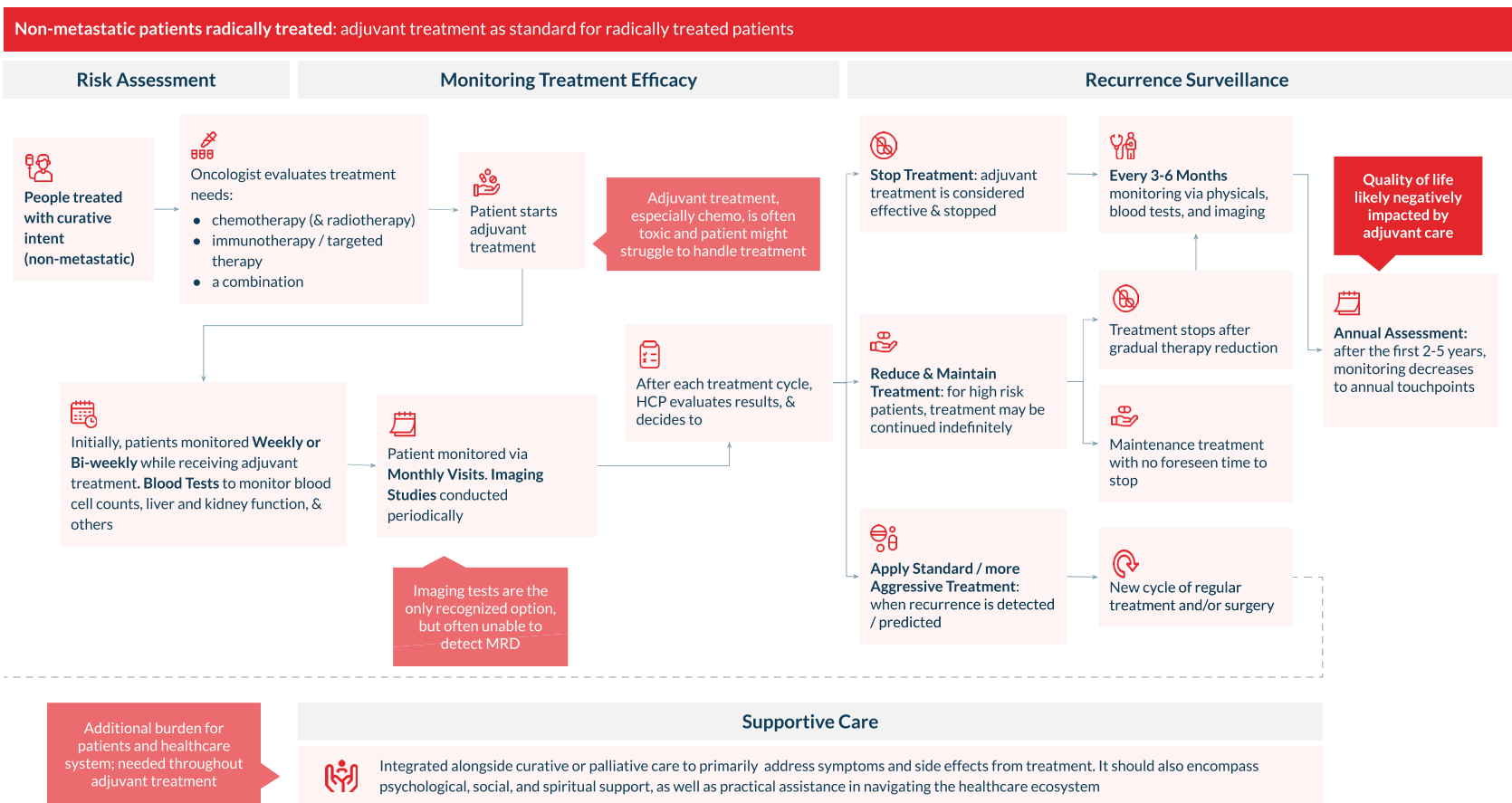


Current vs. Ideal Healthcare Pathway

This document provides a generic overview of the current and ideal pathways for cancer care.

The current pathway offers a snapshot of the existing journey for cancer patients, while the ideal pathway, co-created with patients and healthcare providers, envisions an improved experience that prioritizes better patient outcomes through timely interventions & personalized treatment plans. The ideal pathway highlights the potential of ctDNA testing for Minimal Residual Disease detection and the key improvement points in cancer care.

Current Pathway: Adjuvant treatment as standard for radically treated patients, can be composed of chemotherapy, radiotherapy, immunotherapy, targeted therapies, or a combination of some of them



KEY STAKEHOLDERS

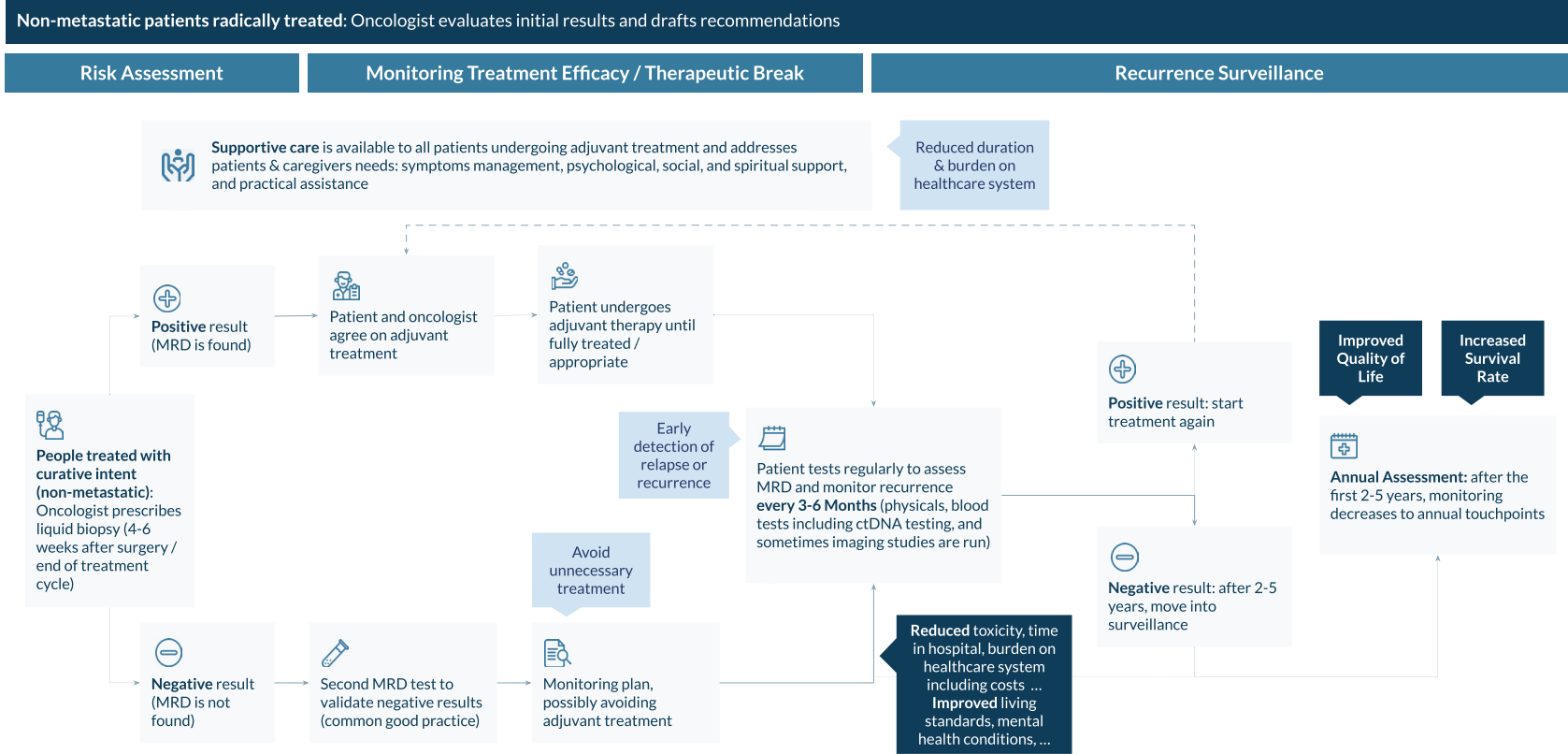
- Patient (& Caregivers)**
Often feeling unheard, not informed & supported enough by HCP team
- Oncologist/Specialist/GP**
Main responsible of treatment decision making & HCPs coordination
- Nurse**
Main point of contact with patients, often not involved by other HCPs
- Pathologist**
Samples analysis, often not involved in test decision & results interpretation
- Radiologist**
Support diagnosis & monitoring through imaging tests reports
- Surgeon**
Consulted ad hoc and involved in surgery & tissue biopsies
- Multidisciplinary Team**
Often not available / involving all relevant stakeholders
- Genetic Counselor / MTBs**
Often not available, especially in rural areas



GUIDE.MRD (2024) Healthcare Pathway Map
 Scientific Coordinator: Prof. Dr. Klaus Pantel
 University Medical Center Hamburg-Eppendorf, Germany

This project is supported by the Innovative Health Initiative Joint Undertaking (JU) under grant agreement No 101112066. The JU receives support from the European Union's Horizon Europe research and innovation programme and EFPIA (including Vaccines Europe), MedTech Europe and LGC Clinical Diagnostics INC. Funded by the European Union, the private members, and those contributing partners of the IHI JU. Views and opinions expressed are however those of the author(s) only and do not necessarily reflect those of the aforementioned parties. Neither of the aforementioned parties can be held responsible for them.

Ideal Pathway: Early detection of cancer relapse through MRD testing & treatment adjustment based on cancer specificities; where appropriate standard of care allows patients to be tested for MRD



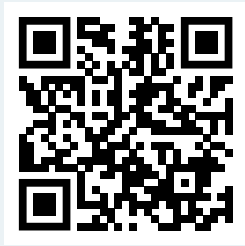
KEY STAKEHOLDERS

- Patient (& Caregivers)**
Shared Decision Making is a standard & patient receives all the needed help
- Oncologist/Specialist/GP**
Aware of innovative testing & treatment options, supported by HCPs
- Nurse**
Coordinates care, involved by HCPs team & brings patient voice to the table
- Pathologist**
Recommends testing & treatment options, support results analysis
- Radiologist**
Coordinates with the rest of HCPs to complement with imaging studies
- Surgeon**
Consulted ad hoc and involved in surgery & tissue biopsies
- Multidisciplinary Team**
Available in all care facilities (through hybrid options) for all patients
- Genetic Counselor / MTBs**
Available in all care facilities (through hybrid options) for all patients

Watch this video to learn more about the ideal healthcare pathway



Subscribe to our newsletter and follow us on LinkedIn!



guidemrd-horizon.eu